



Wildfire Preparation and Mitigation Seminar

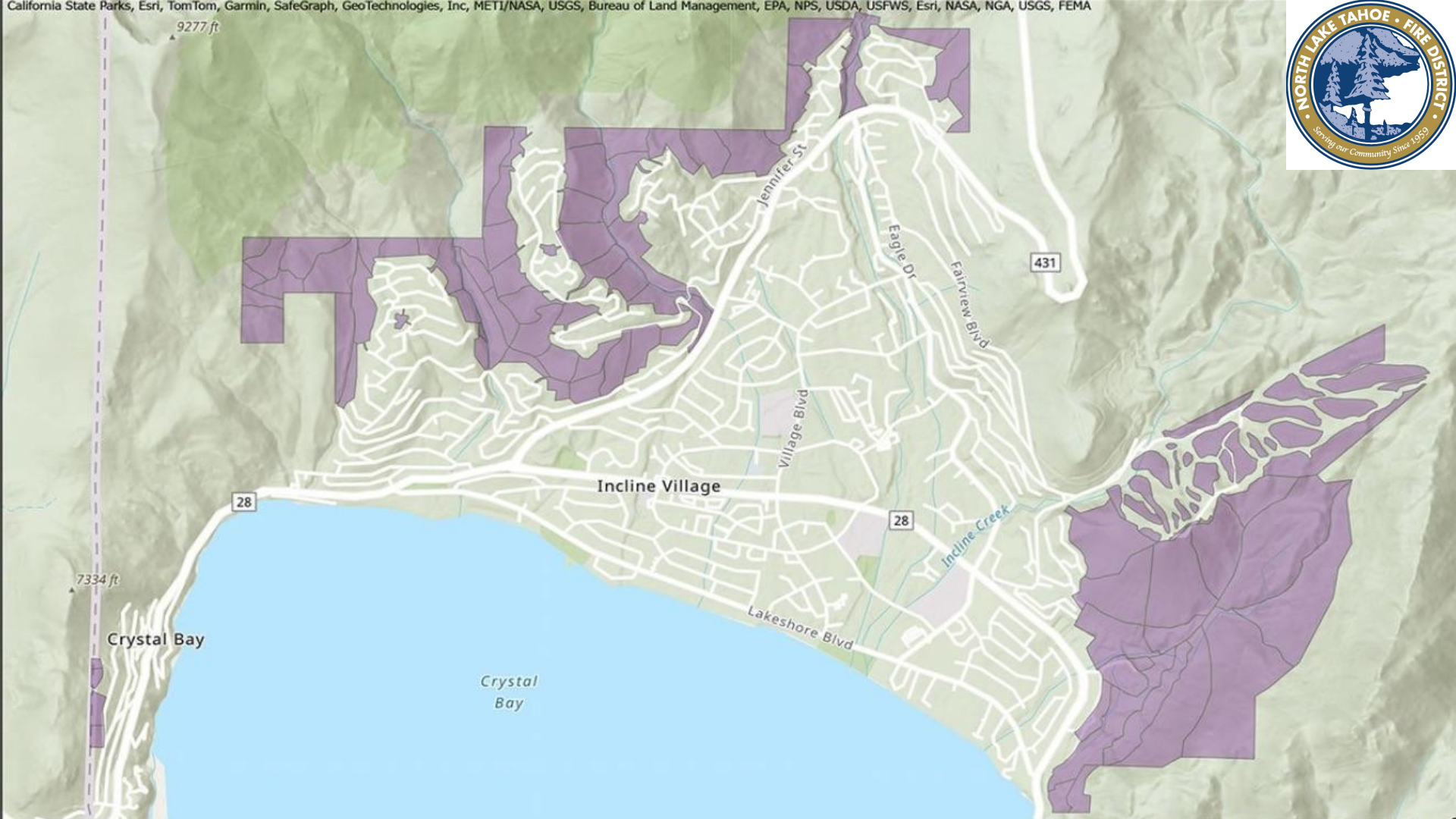
May 26, 2026 | Incline Village, NV

Agenda

- Welcome & Introductions – Kristie Wells
- “Worm Project” + Defensible Space Requirements – North Lake Tahoe Fire Protection District
- Fire Adapted Communities – Tahoe Resource Conservation District
- Doing the Work | Upper Tyner Summary – Tom Millhoff
- Insurance Requirements – State Farm & Peyton Insurance
- Ask the Experts – Kristie Wells



**North Lake Tahoe
Fire Protection District
Ryan Dominguez**



9277 ft

28

Incline Village

431

28

7334 ft

Crystal Bay

Crystal Bay

Lakeshore Blvd

Incline Creek

Village Blvd

Fairview Blvd

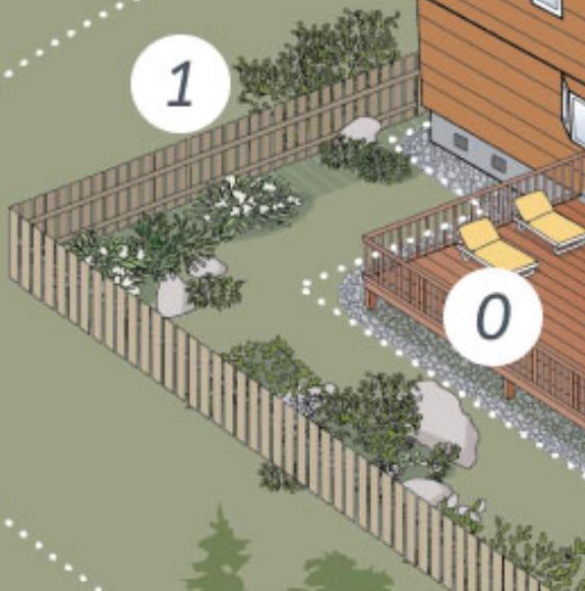
Eagle Dr

Jennifer St

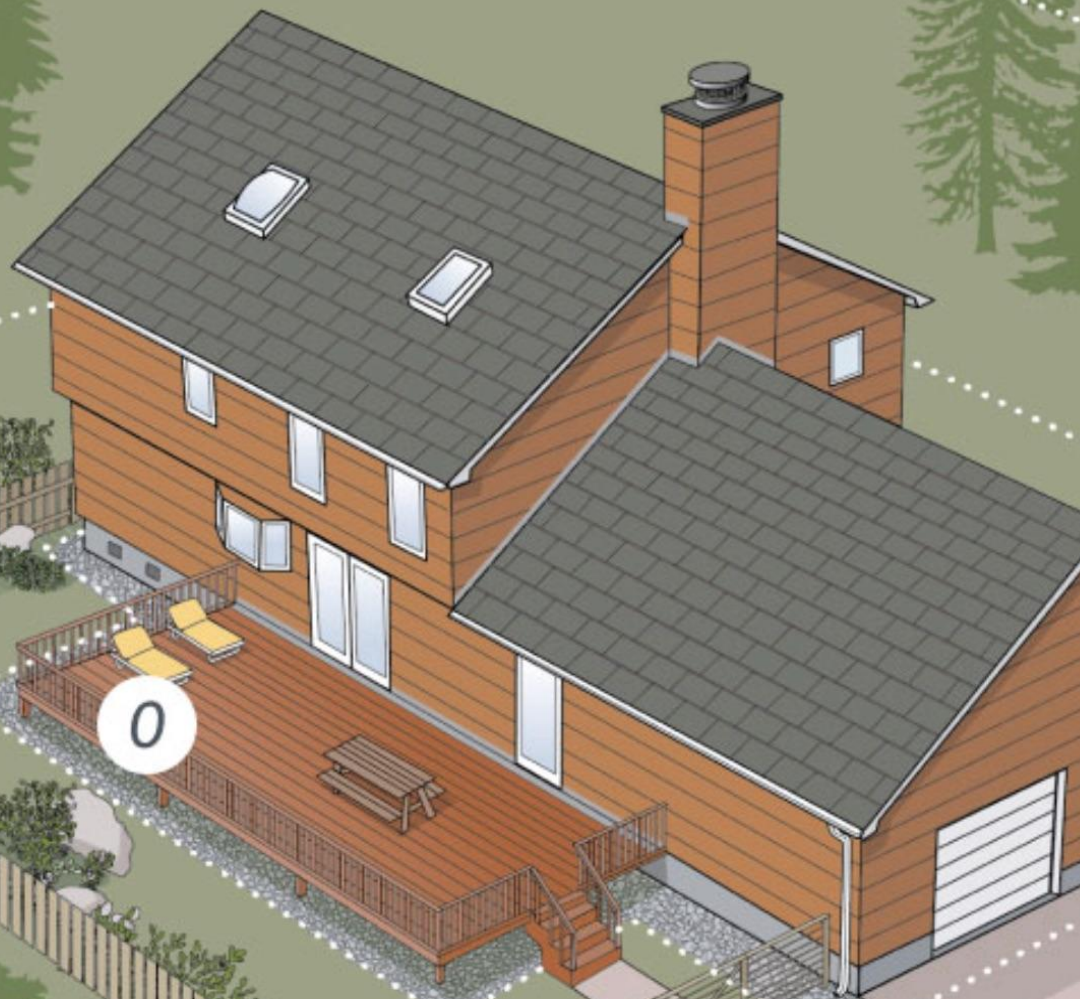
2



1



0





**Tahoe Resource
Conservation District
Kelsey Stalker**

Tahoe Network of Fire Adapted Communities



Tahoe Network of Fire Adapted Communities



Kelsey Stalker
Fire Adapted Communities
Tuesday, May 26, 2026



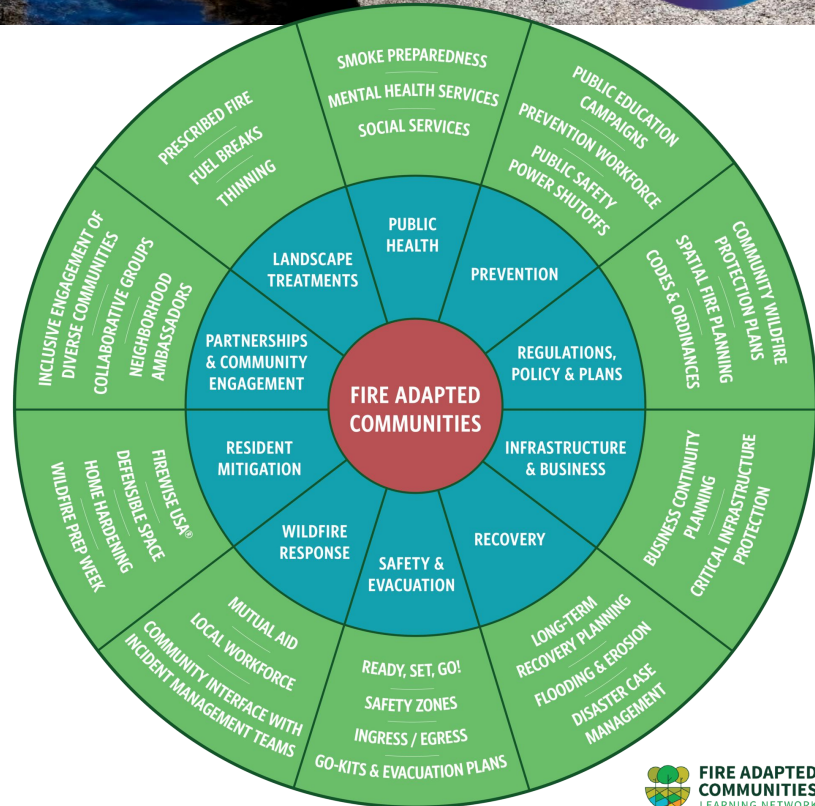
What are Fire Adapted Communities?

Fire Adapted Communities (FAC) is a holistic and adaptive framework to help communities better coexist with wildfire.

Fire Adapted Communities are informed, prepared, and collaboratively taking action to live with wildfire.

FAC Program

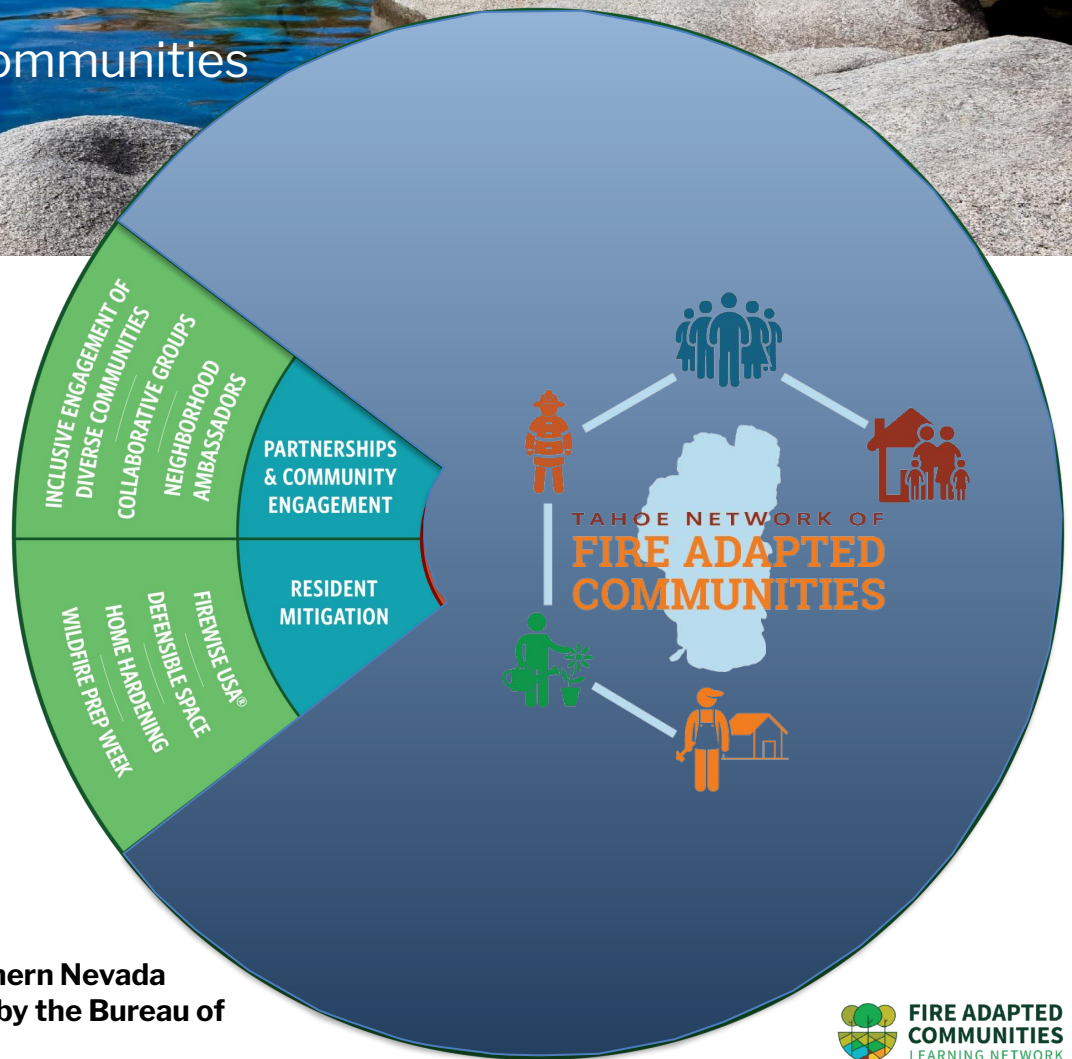
- **CONNECTS**
- **EDUCATES**
- **EMPOWERS**



Tahoe Network of Fire Adapted Communities

The Tahoe Resource Conservation District manages the Tahoe Network of Fire Adapted Communities Project

The TNFAC Project has deliverables to accomplish specific elements of the FAC Wheel



This project was funded due to the Southern Nevada Public Land Management Act, overseen by the Bureau of Land Management



Tahoe Network of Fire Adapted Communities

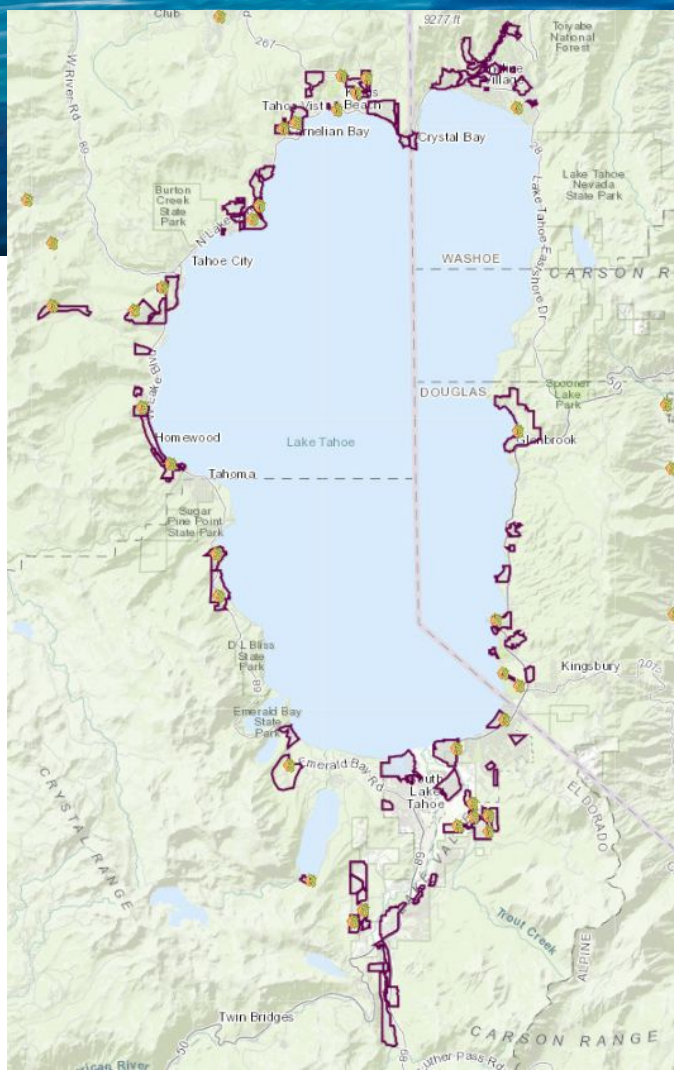


Tahoe Network Partners Focus

- Defensible Space Inspections
- Curbside Chipping
- Community Assistance

Tahoe RCD's Focus

- Neighborhood Leader Program – provide support and increase capacity for Leaders
- Firewise USA recognition support
- Community Workday assistance, Trainings, Event coordination, Resources, Newsletters, Outreach



- **198 Neighborhood Leaders**
- **114 Engaged (15 in Incline) Fire Adapted Communities**
- **84 Firewise USA recognized sites**





Support through Fire Protection Districts



Funding for Defensible Space Inspections and Community Outreach



Funding for Chipping



Fire Adapted Communities



Tahoe Network of Fire Adapted Communities

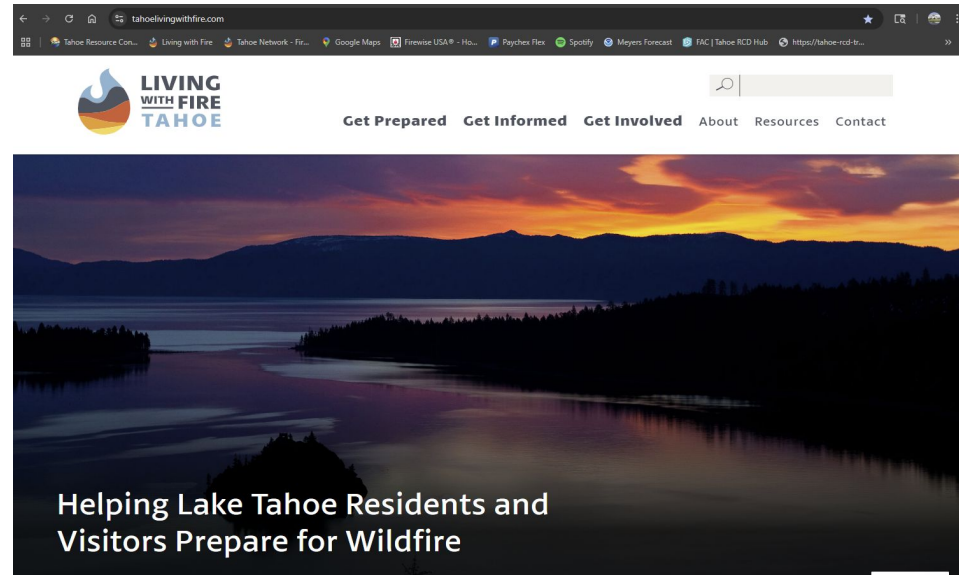


Fire Adapted Communities

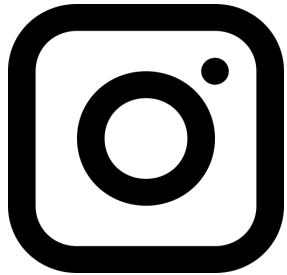




Publications and Digital Media



Tahoe Network of Fire Adapted Communities



[@tahoelwf](https://www.instagram.com/@tahoelwf)

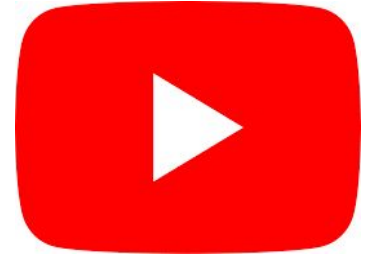


[Tahoe Living
with Fire](https://www.facebook.com/TahoeLivingwithFire)



**LIVING
WITH FIRE
TAHOE**

www.tahoelivingwithfire.com



[Tahoe Living
with Fire](https://www.youtube.com/TahoeLivingwithFire)

Tahoe Network of Fire Adapted Communities



Tahoe Network of Fire Adapted Communities

This project was funded due to the Southern Nevada Public Land Management Act, which authorized the sale of BLM administered federal lands within a designated boundary in the Las Vegas Valley and required proceeds to be used on projects to fund federal, state and local projects that benefit communities and public lands.



Thank You!



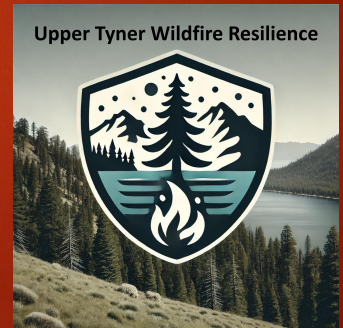


Upper Tyner Case Study

Tom Millhoff

Doing the Work: Upper Tyner

- ▶ The Greatest Risks to Your Home
- ▶ Help: Wildfire Programs
- ▶ Engagement: Online & Neighborhood
- ▶ Metrics & Outcomes
- ▶ Easy Next Steps



When Embers Fly:

What's the greatest ignition risk to your home?



Risk starts at home - not the forest

In a dense WUI neighborhood, the built environment becomes the fuel bed.

1

YOUR HOUSE + 0-5 FT ZONE

Clean corners, vents, decks, mulch, needles, wood piles, shrubs, fences.

2

NEIGHBOR'S HOUSE + YARD

A burning structure can throw embers, flame and radiant heat at adjacent homes.

3

SURROUNDING FORES

Still dangerous - but often less controllable than the fuels at each house.

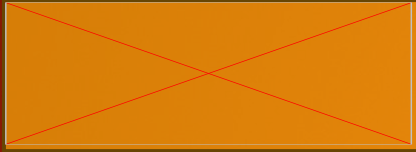
The forest may bring the fire to town.

Homes and yards decide whether it becomes a neighborhood fire.

Individual homes lower ignition risk; coordinated neighbors lower spread risk.

...We're all in this together... let's work together.

Help: Wildfire Programs



▶ Fire Adapted Nevada

- ▶ Defensible Space, Home Hardening, Evacuation
- ▶ Find resources at Living with Fire Tahoe



▶ Tahoe Network of Fire Adapted Communities

- ▶ Multi-agency + community collaboration
- ▶ Grant funding for community-wide efforts
- ▶ Coordinate with NLTFPD



▶ Firewise USA

- ▶ Community risk reduction & certification program
- ▶ Benefits: insurance, grants and shared risk reduction
- ▶ Coordinate with Tahoe RCD

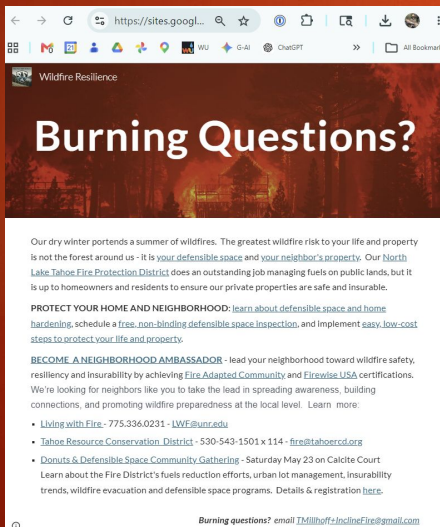
Engage: Block Party / Social

- ▶ Kickoff for FAC + Firewise USA
- ▶ Work with Ryan Dominguez & NLTFPD
 - ▶ Format – like this event, but neighborhood-specific
 - ▶ Food & drink draws crowds!



Engage: Online ID leaders, promote block party

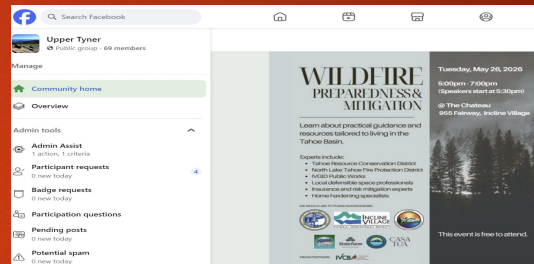
Google Sites:
Flexible, Evergreen
Landing Page



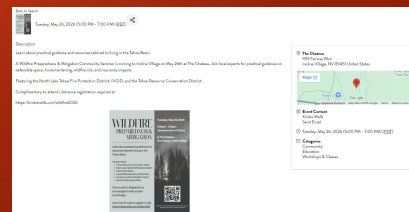
Evite:
Event-specific,
Contact capture



Facebook:
Events + Evergreen



IVCBA: Events



Engage: Signs & Flyers

- ▶ Source Ambassadors: Lawn Signs + Landing Page
- ▶ Block Party Promotion: Build Buzz & Community
 - ▶ 1 month: Lawn Signs + Event Page
 - ▶ 2 weeks: Door-to-door + Flyers
 - ▶ 1 week: rotate signs
 - ▶ Following event: pull signs + flyers



Metrics & Outcomes

- ▶ METRICS: Firewise Action Plan:
 - ▶ Inspections & Risk Assessment (NLTFPD)
 - ▶ Education & Outreach
 - ▶ Home Hardening, Defensible Space & Fuels Reduction
 - ▶ Evacuation Planning & Wildfire Preparedness
- ▶ OUTCOMES
 - ✓ Inspection, Wood Chipping, Green Waste programs
 - ✓ Workdays & Dumpsters
 - ✓ Firewise □ WORM + Burnbot □ Safe & Insurable
 - ✓ **Lower ignition risk - individual homes**
 - ✓ **Lower spread risk - coordinated neighbors**

Fire adapt your Neighborhood!

1. Stop by Tom's Tyner Table – tips, tricks & help
2. ID your Neighborhood Ambassadors
3. Define your boundaries with NLTFPD
4. Plan, promote & present a Wildfire Block Party
5. Firewise USA Application



The forest may bring the fire to town.

Homes and yards decide whether it becomes a neighborhood fire.

Fire Adapted Communities Program

Firewise USA

Works with your neighborhood on a higher level to support wildfire safety AND help you achieve Firewise USA recognition

Provides guidance for neighbors to work together to achieve greater wildfire safety

Provides free chipping services and defensible space inspections

Provides publications, website, resources, & local experts

Provides local workshops & presentations

Provides on the ground local resources & experts who can help coordinate & build communication



Both programs are a framework for wildfire action

Both encourage wildfire education & community building

Both programs require neighborhood leader involvement

Workdays can count for both programs

Nationally recognized program

Provides publications & website

Provides recognition and may lead to insurance discounts



FIREWISE USA™
Residents reducing wildfire risks



Insurance Requirements

Britney Bladel and Michael Peyton

Insurance Q&A

1. From your perspective, what are the biggest factors insurance companies are looking at right now when evaluating homes in Tahoe?
2. What are the top two or three things homeowners can do today that will most improve their chances of obtaining - or keeping - insurance coverage on their home?
3. If you could give Tahoe homeowners one piece of advice to help them become more insurable over the next few years, what would it be - and what mistakes are you still seeing people make?

A dramatic landscape photograph capturing a wildfire at sunset. The scene is dominated by a large, intense fire on a forested hillside, with thick, dark smoke billowing into the sky. The sun is low on the horizon, casting a warm, golden glow over the scene. In the foreground, a large, clear lake reflects the sky and the fire. Several boats, including sailboats and motorboats, are scattered across the water. The shoreline is visible with some buildings and a parking area. The overall mood is one of awe and danger.

Ask the Experts

Thank You to Our Sponsors



CASA
TUA



TimberTech®



EVOLUTION™
STEEL DECK FRAMING

Media Partners



Tahoe Daily Tribune